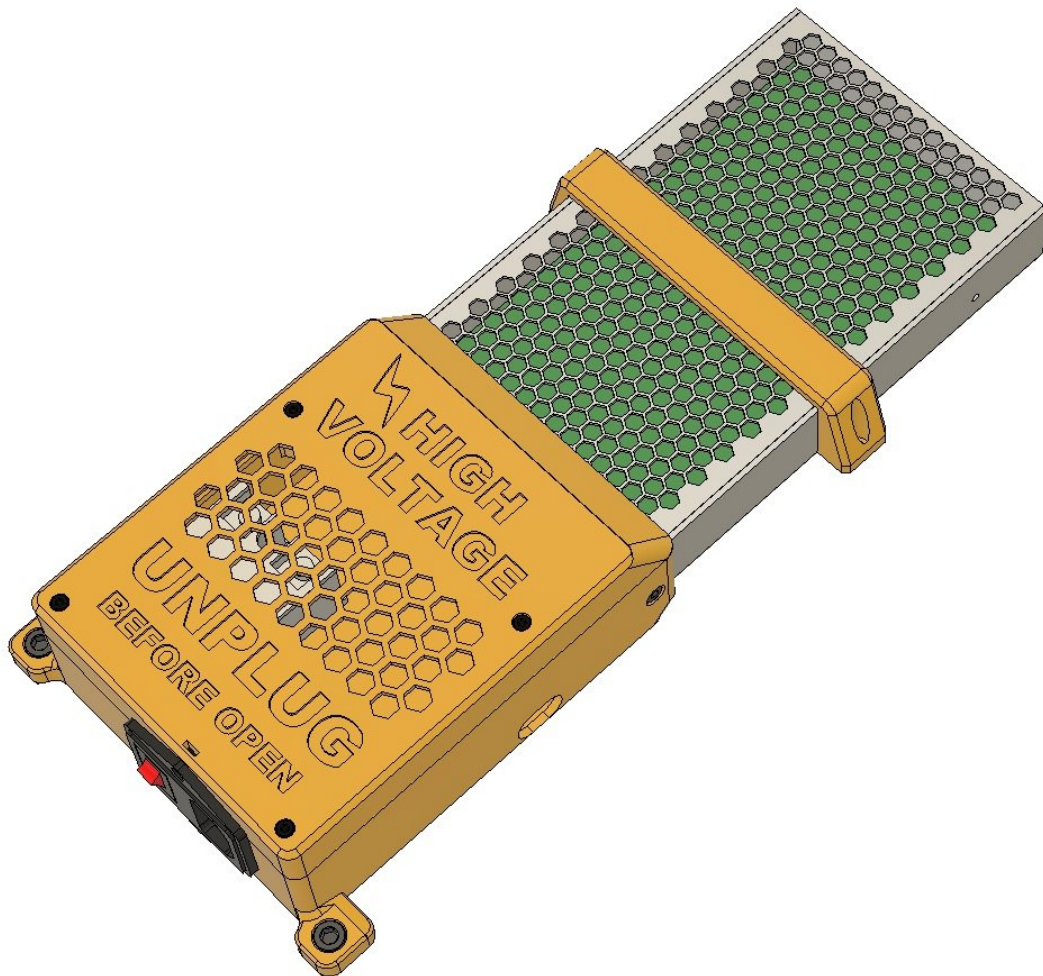


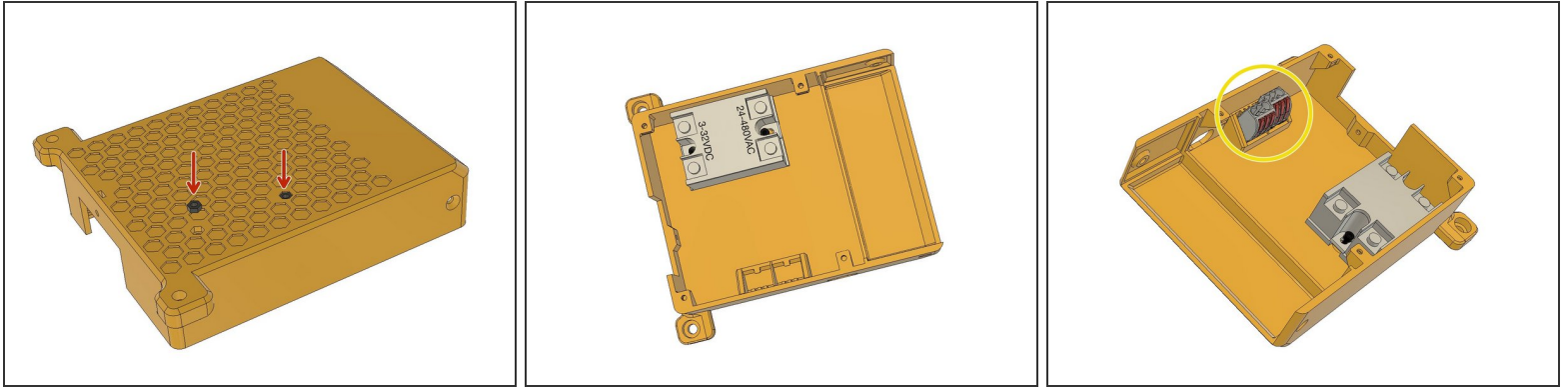
zaribo

## 07 | PSU Assembly

Written By: ZARIBO

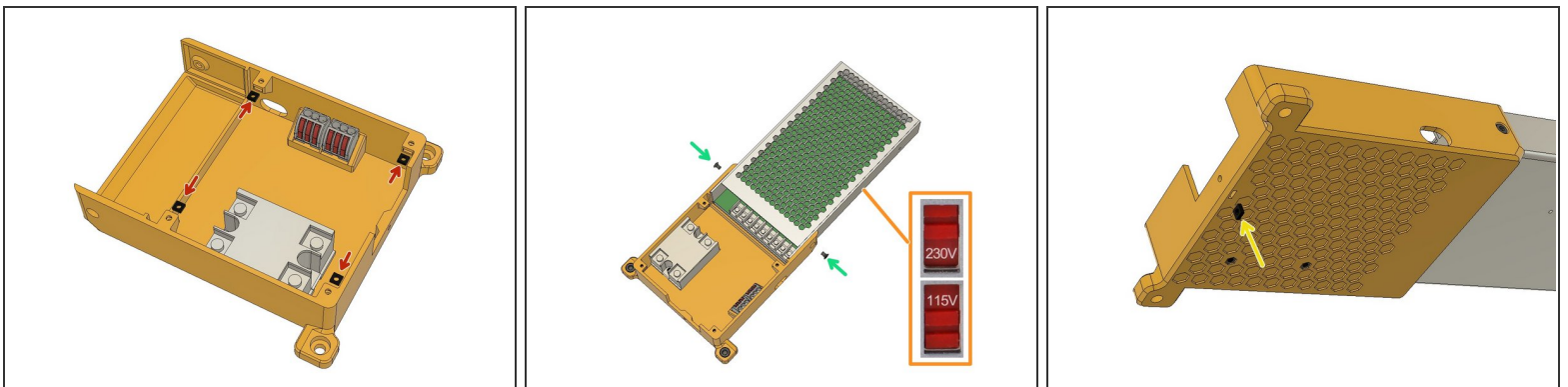


## Step 1 — 07 | PSU Assembly



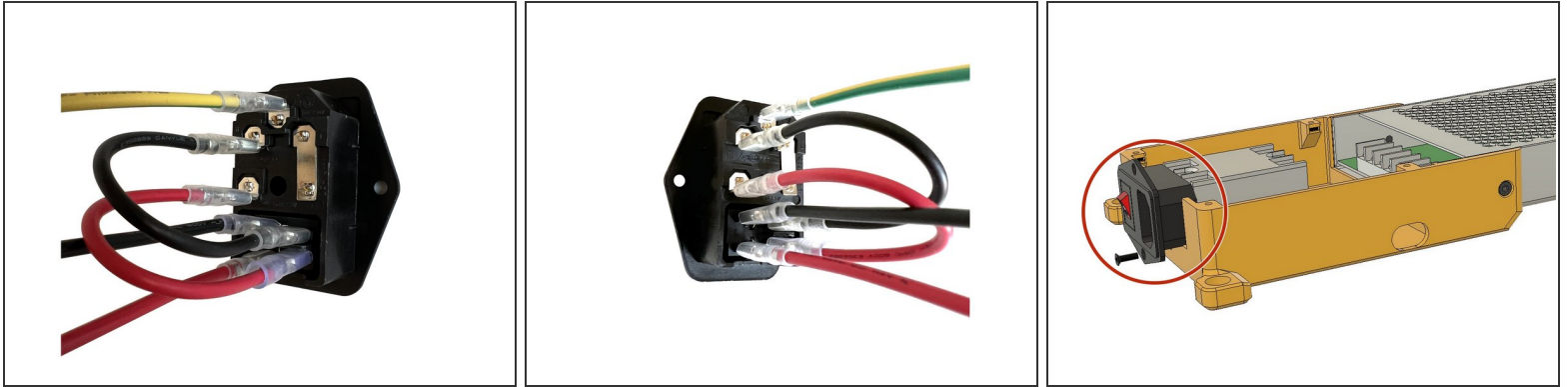
- Insert two M3 Hex Nuts to the back slots of the PSU housing body.
- Mount the SSR module with **M3 x 8mm Screws**. The orientation of the SSR is important for cable management. Please position as seen on the picture.
- Place the **WAGO 3pin Terminals** to their slots in the PSU Body. You should feel a slight click when you push them.


## Step 2



- Insert **M3 Square Nuts** for cover.
- Select the correct mains voltage on your **PSU**.
- Mount the **LRS 250W PSU** with two **M4 x 4mm** screws.
- Insert an **M3 Square Nut** for Power Connector.

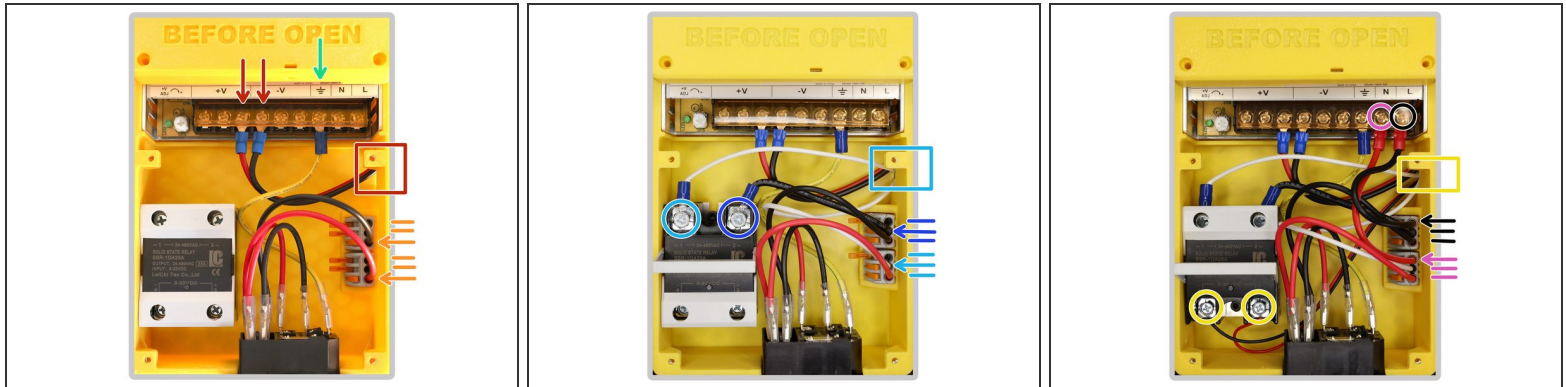
## Step 3



 To prepare the Power Socket, connect the cables as seen in the pictures.

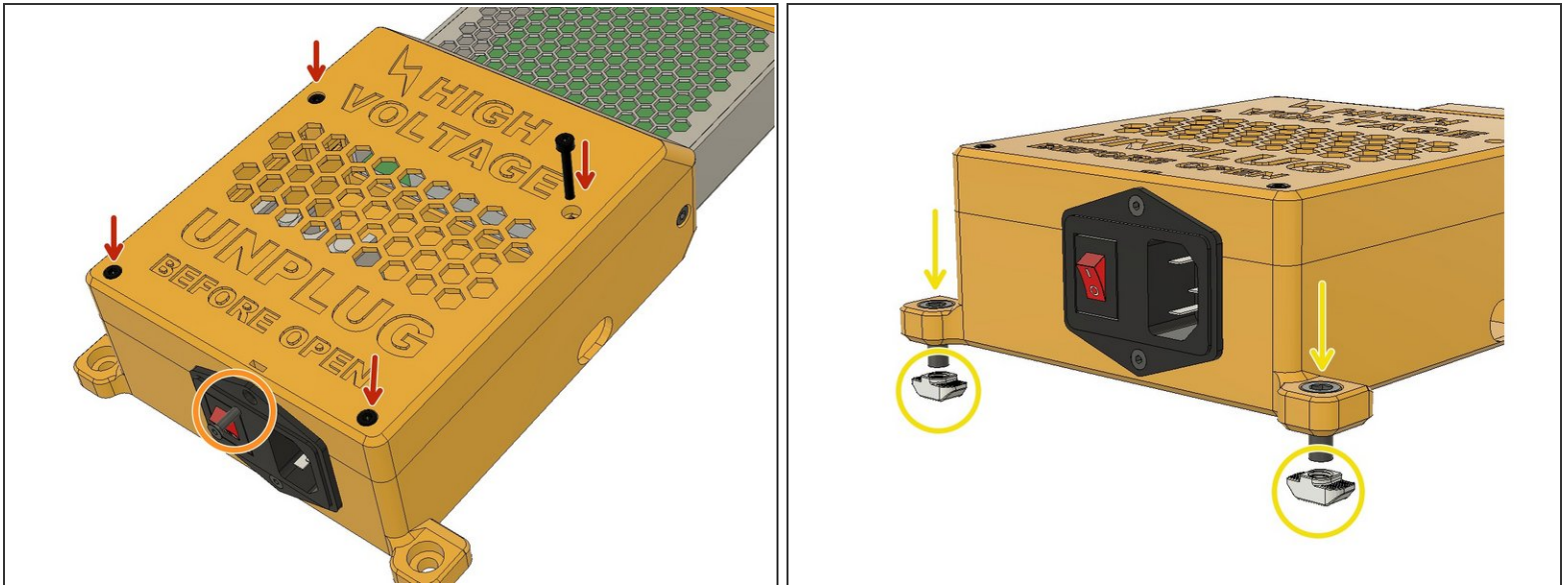
- Slide the power socket to the slot on the **PSU** body and fasten it with an **M3 x 6mm Counterbore** screw.

## Step 4



- Pass the **Octopus Pro** controller's 24v power cable through the side hole and connect it to the V+ and V- ports on the **PSU**. Red cable should be connected to + Red/Black cable should be connected to -
- Connect the yellow GND cable coming from **Power Socket** to the Ground port on the **PSU**.
- Insert the crimped cable ends to the **WAGO** connectors as seen in the picture and lift down the orange levers to lock them.
- Pass the **Heated Bed Power Cables(28cm)** through the side hole of the body and connect the fork crimp terminal to SSR. Connect the other end of the cable to the lower WAGO. *This is an AC cable that has no orientation requirement.*
- Connect the other side of the **SSR** to the upper **WAGO** with the supplied 10cm cables.
- Connect the N port on **PSU** to the **WAGO** terminal at the bottom with the supplied 10cm cable.
- Connect the L port on PSU to the WAGO terminal with the supplied 10cm cable.
- Lastly, pass the **Board to SSR Cable** through the hole on the side of the body and connect the bottom terminals of the **SSR**. This cable is a DC cable and orientation is important. Please connect the RED cable to the terminal on the right. (+)

## Step 5



- Use the **M3 x 20mm** screws to mount the cover of the **PSU** housing.
- Use an M3 x 8mm Counterbore screw to the power socket's remaining hole to secure it in its place.
- Use two **M6 x 12 mm** and two **M6 Drop-in T-nuts** to mount the PSU to the frame.

## Step 6



- Turn the printer's backside down and assemble the PSU by tightening the **M6 x 12mm** screws and T-Nuts. Please ensure that a 5mm gap has been left between the plastic and the T-Nut.
- Use **M3 x 10mm** screws to mount the PSU Holder clamp with the **M3 Square Nut** holders.